

Pressure maintaining regulator

150 Series

483 bar
max inlet

0-483 bar
Control range

Reliable & Rugged
design

Options
available

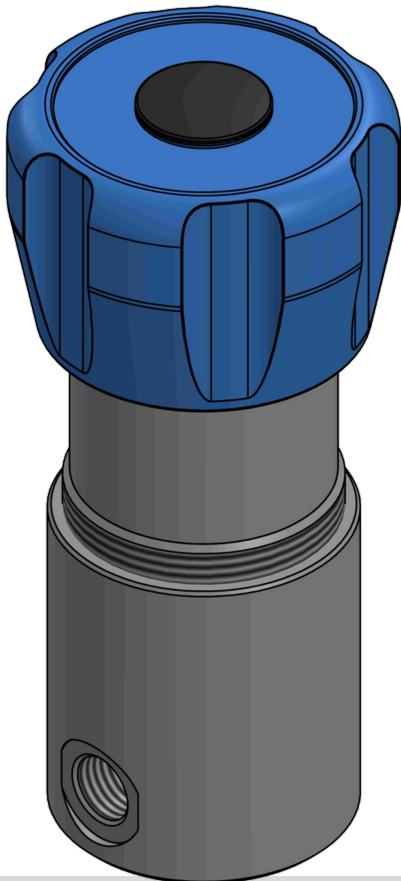
Liquid or gas
service

The 150 series is a comprehensive range of hand adjustable up-stream pressure maintaining regulators, offering a choice of different sensing capsules and high/low flow main valve modular alternatives.

These regulators are capable of providing accurate repeatable up-stream pressure control over a wide exhaust flow range.

Choice of materials compatible with most common liquid / gas applications, including SS316L for Hydrogen service and Brass/bronze for Oxygen service.

Special options for individual service requirements are available, and various operational feature additions are offered, making this a general purpose regulator that will suit most applications.



Specification

Max Inlet Pressure	483 Bar
Controlled Pressure Range	0 – 483 Bar
Cv	0.7
Design Proof Pressure	200% MAWP
Seat Leakage	ANSI/FCI 70-3

Features and benefits

- Suitable for Liquid and gas applications
- Compact modular design
- Low handwheel adjustment torque
- 7 controlled pressure ranges
- Optional extras including gauge ports, mounting brackets etc

Options

Materials of Construction	Stainless Steel 316L (H ₂ service) Brass/Bronze (O ₂ service) Aluminium alloy 6082T6
Porting	3/8" BSP/NPT 1/2" BSP/NPT
Gauges	Option available 1/4" BSP/NPT Ports

JRE Precision Ltd
t/a Presreg Valves

Designed and manufactured in the UK

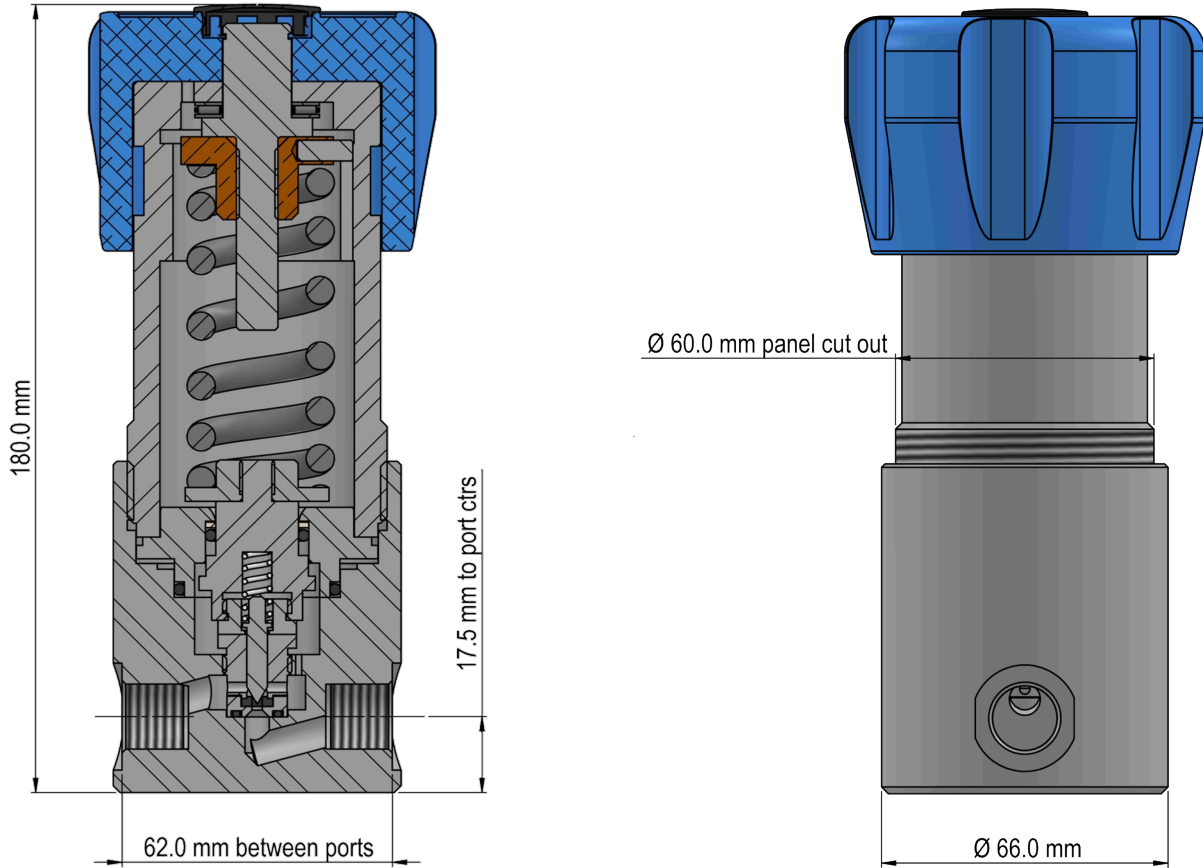


18 Bakewell Road, Loughborough
Leicestershire, England LE11 5QY

Tel: 01509 610580 Email: info@jreuk.com Web: presreg.com

Specification and Ordering info

150 Series



Spares and service kits available, please contact our sales office or visit our website for details.

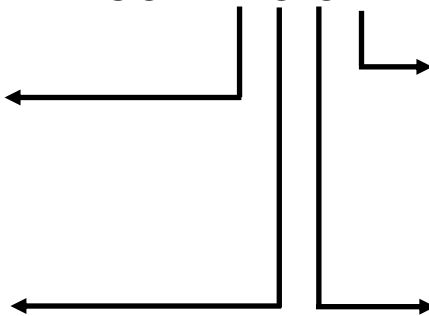
Controlled pressure range

A	0–17 bar	E	62–241 bar
B	7–35 bar	F	207–483 bar
C	14–69 bar		
D	28–138 bar		

Material of construction

1	SS 316L (H ₂ service)
2	Aluminium alloy 602 T6
3	Brass/Bronze (O ₂ service)

150 – X O O X



Optional extras

W	Inlet & Outlet gauge ports
WI	Inlet gauge port only
W	Outlet gauge port only
O	
Z	Panel mounting bracket

Port options

1	3/8" BSP
2	3/8" NPT
3	1/2" BSP
4	1/2" NPT

Example part number: 150-F11: 207-483 bar control range, Stainless steel construction, female 3/8" BSP ports, no extras

All of our products are constantly assessed for possible improvements and the specifications listed here are subject to change. Please ensure you have the latest issue...

