

# Pressure maintaining regulator

# 152 Series

0–35 bar  
Pressure range

High accuracy

High flow  
capacity

Diaphragm  
sensed

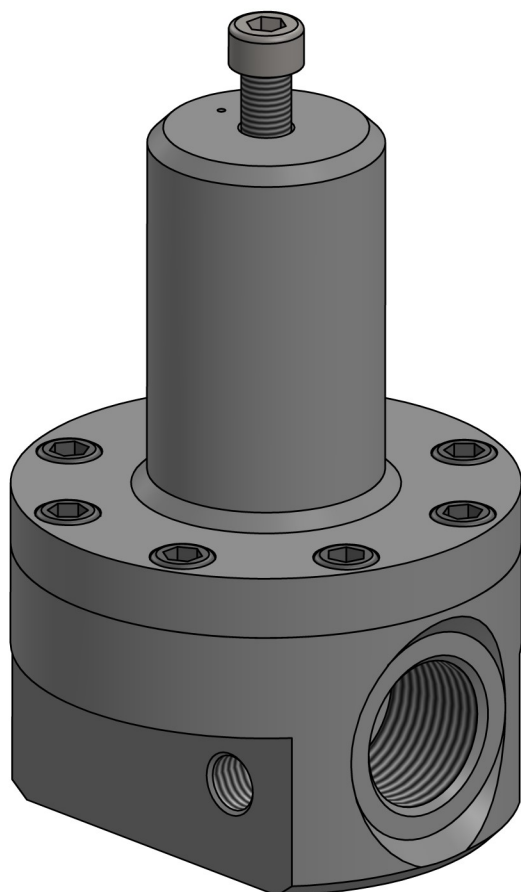
Liquid or gas  
service

The 152 series is a range of low pressure up-stream pressure maintaining regulators.

Spring loaded and fully adjustable, the 152 series comes with 3 diaphragm sensing modules—offering high accuracy and repeatability over a wide discharge flow profile.

A variety of material and porting options make this regulator compatible with most LIQUID or GAS applications.

Dome loaded and pilot signal biasing are available upon request.



*Grub screw control & Spring loaded version shown*

## Specification

|                           |                    |
|---------------------------|--------------------|
| Max. inlet pressure       | 35 bar             |
| Controlled Pressure Range | 0–35 bar           |
| Cv                        | 2.5 Cv             |
| Design Proof Pressure     | 200% MAWP          |
| Dimensions                | Ø 102.0 x 203.0 mm |
| Weight                    | 3.5 kg             |

## Features and benefits

- High sensitivity/accuracy diaphragm control
- 5 pressure control ranges, covering 0–35 bar
- 2.5 Cv internally damped main valve
- Suitable for both LIQUID and GAS applications
- Choice of material and porting options
- Handwheel or grub screw with security nut options

## Options

|                           |   |
|---------------------------|---|
| Materials of Construction | Aluminium alloy 6082T6<br>Brass/Bronze (O <sub>2</sub> service)<br>Stainless Steel 316 (H <sub>2</sub> service) |
| Porting                   | 1/2" BSP/NPT<br>3/4" BSP/NPT<br>1" BSP/NPT<br>Bespoke   |

A range of spares kits are available, please contact our sales office or visit our website for details.

Regular service schedule recommended.

**JRE Precision Ltd**  
t/a Presreg Valves

Designed and manufactured in the UK



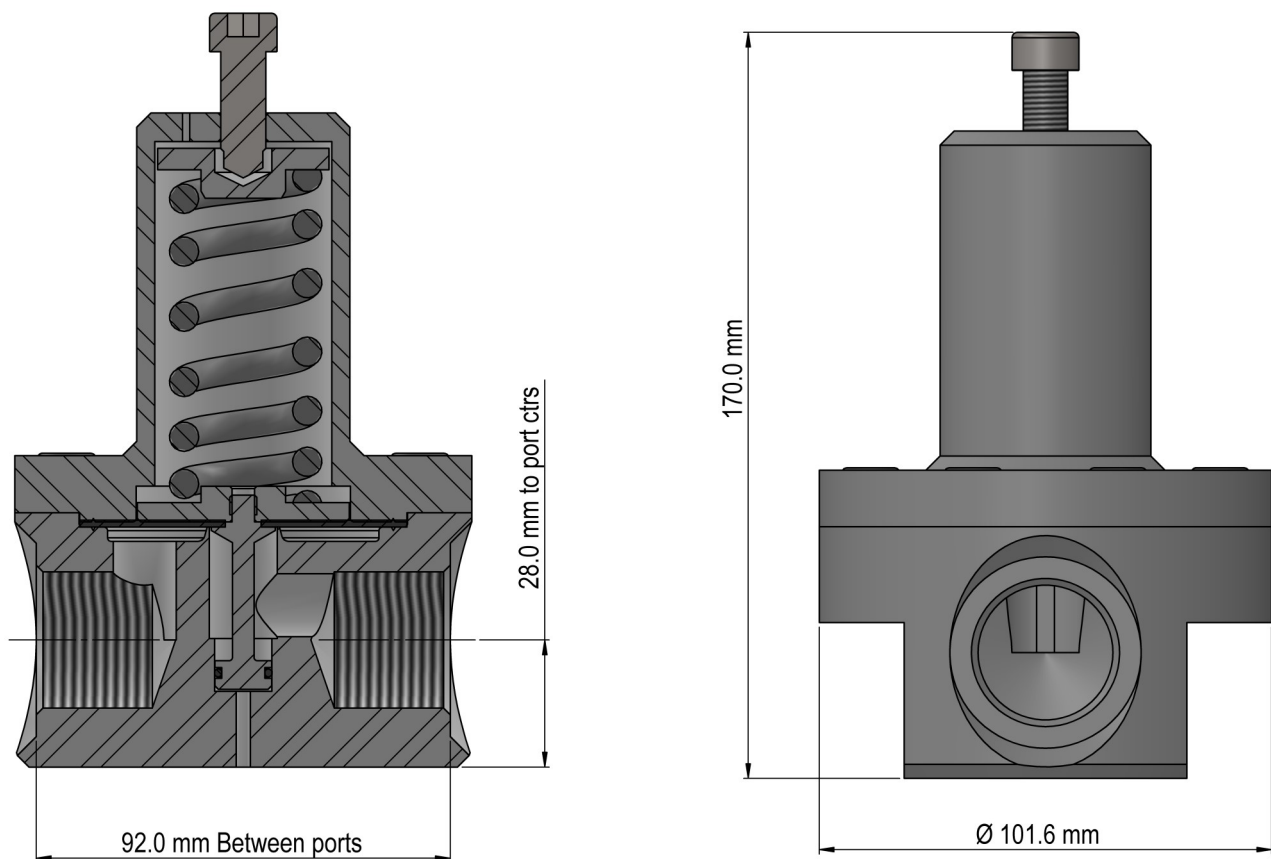
18 Bakewell Road, Loughborough

Leicestershire, England LE11 5QY

Tel: 01509 610580 Email: [info@jreuk.com](mailto:info@jreuk.com) Web: [presreg.com](http://presreg.com)

# Specification and Ordering info

# 152 Series



Spares and service kits available, please contact our sales office or visit our website for details.

| Pressure range |            |
|----------------|------------|
| A              | 0 - 7 bar  |
| B              | 0 - 10 bar |
| C              | 0 - 15 bar |
| D              | 0 - 20 bar |
| E              | 0 - 35 bar |

152 - X 0 0 0 0 0

| Optional extras |                           |
|-----------------|---------------------------|
| WI              | Inlet gauge port          |
| WO              | Outlet gauge port         |
| W               | Inlet & Outlet gauge port |
| Y               | Security adjuster         |
| Z               | Pilot pressure aux.       |

| Material of construction |                         |
|--------------------------|-------------------------|
| 1                        | Aluminium alloy 6082 T6 |
| 2                        | Brass (O2 Service)      |
| 3                        | Stainless Steel 316     |

| Port size |         |
|-----------|---------|
| 1         | 1/2"    |
| 2         | 3/4"    |
| 3         | 1"      |
| 4         | Bespoke |

| Port thread form |         |
|------------------|---------|
| 1                | BSP     |
| 2                | NPT     |
| 3                | Bespoke |

Example part number: 152-D312W: SS316 construction, female 1 1/2 NPT ports with inlet and outlet gauge ports

All of our products are constantly assessed for possible improvements and the specifications listed here are subject to change. Please ensure you have the latest issue...

**JRE Precision Ltd**  
t/a Presreg Valves

Designed and manufactured in the UK



18 Bakewell Road, Loughborough  
Leicestershire, England LE11 5QY

Tel: 01509 610580 Email: info@jreuk.com Web: presreg.com